

Case Study

Client:



Client since 1995

Project:

Security Systems Centralisation Project.

Value:



Project brief

Sandwell Homes is an Arms Length Management Organisation (ALMO) which is responsible for managing over 30,000 properties in Sandwell, located on the outskirts of Birmingham City.

Delaware Communications (part of the OpenView Group) was awarded the contract via a public tender process during 2010 and the project was successfully completed on time and in budget during March 2011.

The brief was to decommission local security systems (concierge facilities) and network the services back to a new centralised control room / alarm receiving centre which complies with BS5797 to enable a police response to alarms.

Benefits

Sandwell's objective was to deliver security system services more effectively and save money in the process. This objective was clearly achieved and is now providing financial benefits using a state of the art fully integrated system. The new systems are now much more reliable providing Sandwell with a lower cost of ownership for both the equipment and the operational services.

Our solution

- OpenView acted as the principle contractor to deliver a fully integrated system which provides security services for public spaces and over 50 estate housing blocks.
- CCTV - Over 500 CCTV Cameras networked back to the control room for recording and monitoring.
- Door Entry - 1,000's of intercoms in housing dwellings networked from over 50 buildings back to a centralised concierge facility - the largest networked system in the UK
- Intruder Alarm - remote monitoring service to BS5797 standards.
- Network Infrastructure - a complex communications network consisting of wired and wireless communications.
- Access control - electronic key fobs for all residents to control entry to premises throughout the entire estate and centrally manage from the new control room with full audit trail.
- Control room - a complete fit out within the new central security building including equipment and operator areas.



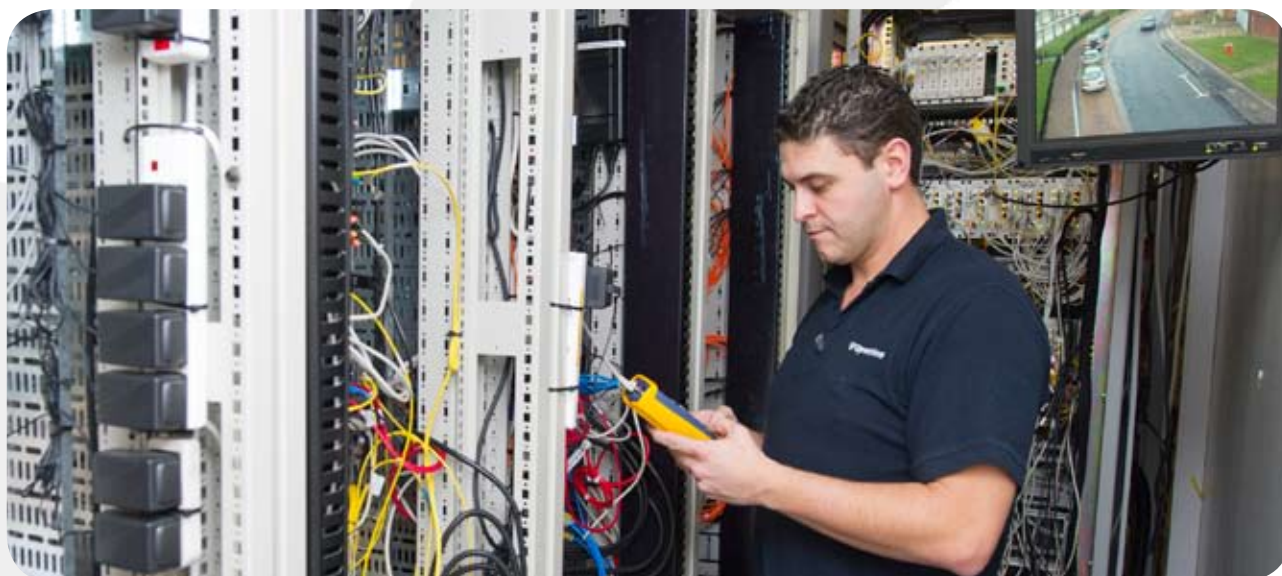
Reg New and Jason Flannagan at the Sandwell control centre.

Systems

- Access Control Systems
- CCTV Systems
- Door Entry & Intercom Systems
- Intruder Alarm Systems
- Nurse & Warden Call Systems
- Communal Aerial Systems
- Vehicle Barrier Controls
- Internal Barrier Controls
- Front End System Integration
(Security Management Systems)
- Transmission Systems (wireless/
copper / fibre / Ethernet)

Services

- System design including CAD
- Workshop test & pre-build facilities for FATs
- Bespoke software for complicated system integration
- Project management
- Full installation works
- Full system commissioning / configuration / witness testing to point of project handover
- Customer / system operator training
- O&M documentation
- Full maintenance & service provision
- 24/7 call centre



OpenView House Chesham Close Romford Essex RM7 7PJ

Tel: 0845 071 9110 info@openviewgroup.com

www.openviewgroup.com