



## CIVIL TRAFFIC ENFORCEMENT SOLUTIONS

OpenView Security Solutions has extensive experience in the provision of civil traffic enforcement solutions. We have a track record of successful installations and provide ongoing support for systems that detect and enforce civil traffic contraventions in a wide range of applications. They include bus lanes through to more complex moving traffic offences such as box junctions, banned turns, restricted access and weight limits. We also provide cost effective solutions to enforce parking restrictions on school keep clears.

We work closely in partnership with all the leading suppliers of enforcement systems including Siemens, Videalert, SEA and TES. This enables us to provide 'best of breed' solutions to meet the individual requirements of councils in a wide range of operational environments.

**SIEMENS**



## SOLUTIONS



### Unattended

Automates the process of capturing contraventions committed for a wide range of offences. Evidence packs are also automatically created for review by trained council operatives before being sent to back office processing systems for the issuance of penalty charge notices to the registered keepers of vehicles. Councils can upgrade seamlessly from manually operated systems using the same infrastructure to increase productivity and reduce manpower and equipment costs whilst maintaining more effective compliance and achieving best value.



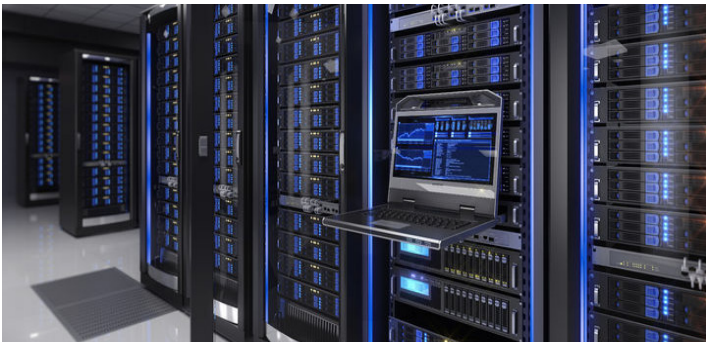
## Manually Operated

Requires operators to monitor each camera location during periods of enforcement and identify contraventions. Evidence packs are usually constructed manually for review before being sent to back office processing systems for the issuance of penalty charge notices.



## Mobile CCTV Enforcement

Mobile Enforcement Vehicles equipped with multiple cameras, both ANPR and context views, can be tactically deployed for unattended or manual operations to enforce all moving traffic and parking contraventions as permitted and specified under current legislation. They can also be used to enforce environmental offences such as fly-tipping as well as community safety and crime prevention activities



## Back Office Integration

OpenView enforcement systems can integrate with all leading PCN processing platforms including Imperial, Xerox, Civica, Chipside and Mouchel.

### Some of our customers



OpenView Security Solutions Limited | OpenView House | Chesham Close | Romford | Essex | RM7 7PJ  
Tel: 0330 058 4110 | [www.openviewgroup.com](http://www.openviewgroup.com)